

# BESTALL & CO



Web: [www.bestall.co](http://www.bestall.co)

Email: [hello@bestall.co](mailto:hello@bestall.co)

Tel: 01246 439340

Address: Bestall & Co, Garden Design Studio,  
The Stables Courtyard, Renishaw Hall,  
Renishaw, Derbyshire S21 3WB

4th edition published January 2018  
Copyright Bestall & Co







*A note from the Founder*

"Thank you for taking the time to look through our portfolio, I hope you find inspiration and joy in the pictures and words you're about to see and read. Lovingly referred to in our company as 'The Book', it describes the journey you can expect to follow when creating a new garden. From tiny modern back gardens to country estates, I'm sure you will find something to inspire you."





## Who we are

We are

Artists

Thinkers

Innovators

Designers

Plants people

Technicians

Inventors

Project Managers

And dreamers...

And everyone of us cares

about everything really, be it the materials we  
specify or simply about always doing the right thing.

Each of us bring a different talent to the table,

and together we create beautiful gardens  
and indulgent outdoor entertaining spaces dressed

with fabulous accessories that

help to give our gardens heart and soul.





## **Welcome to the Imaginarium**

Our design studio is located within the grounds of Renishaw Hall, home to the Sitwell family and a wonderfully inspirational location from which to operate.

Renishaw Hall enjoys views of Derbyshire and sits within a formal Italianate garden laid out by George Sitwell between 1886 and 1936. Each of our visitors experiences a personal guided tour of the gardens during their initial visit, followed by an introduction to some of the team.

## **The Creative Team**

The team is lead by our founder and MD Lee Bestall, a multiple award winning designer with an infectious enthusiasm for plants and genuine passion for external landscapes. "Our team consists of a surveyor, landscape designer, lighting specialist, land artists, landscape contractors, sculptors, passionate plants people and dedicated nurserymen and women. It's incredible to think just how many people are involved in transforming an outdoor space into a beautiful landscape, but by utilising the skills of individual craftspeople you can be assured of an outstanding result."





## **Our Grand Vision**

Our mission is simple. We strive to create inspirational gardens and landscapes where exquisite plant combinations compliment fine quality hard landscaping materials. We aim to create a living landscape that will change the way you view and use your outdoor space, and a beautiful location for you to entertain friends, relax with family and enjoy life outside. It's a mighty claim, but at Bestall & Co we believe we don't just design gardens, we change lives.





"Discovering Bestall & Co was one of the most exciting things to happen during our barn & garden renovation. From the initial consultation with Lee, his team provided us with creative, stunning, but practical designs. The service was excellent throughout. We would definitely recommend this extremely professional company to anyone wishing to make garden improvements".

**Judith Hadley, Cat Hill Foot Farm**





## Garden Design

























"The service provided was excellent from the start of the process. The experience and expertise really helped us redesign the whole garden. The plant choices that were recommended have proven to exceed all our expectations. I would have no hesitation in recommending this company - a first class experience!"

**Louise Marples, Derbyshire**





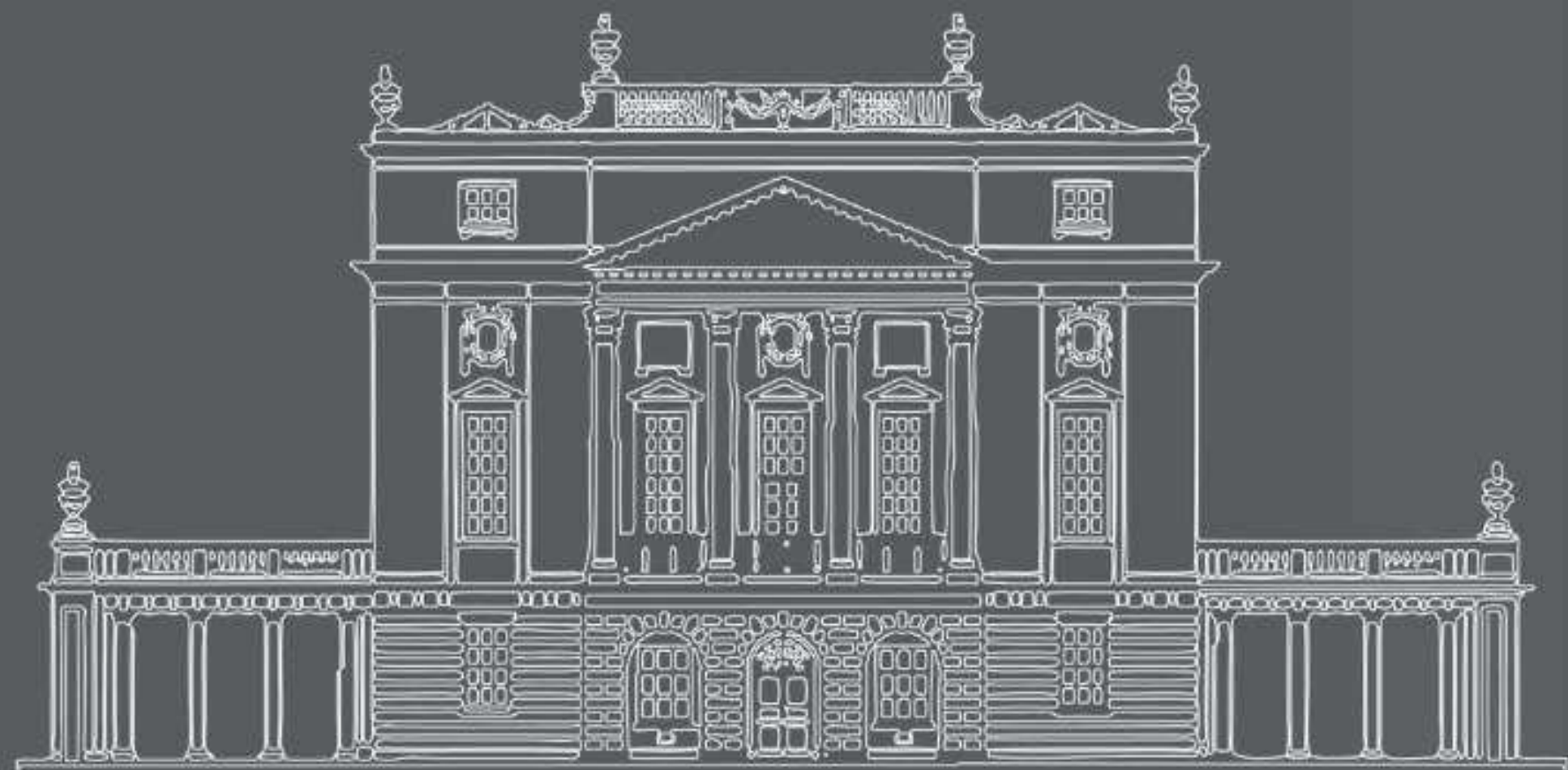












## **Landscape Design**













"We commissioned Bestall & Co to design and build the Experience Peak District & Derbyshire Show Garden for RHS Chatsworth 2017 on behalf of Marketing Peak District & Derbyshire. The concept and finished garden completely fit the brief that we gave them; it was a great pleasure to overhear visitors to our garden at RHS Chatsworth discuss how the formal Italianate garden and the open pasture, complete with metallic cows, was a great representation of the formal gardens of the area's stately homes and the beautiful open landscapes of the Peak District and Derbyshire. Bestall & Co were a delight to work with, bringing passion and enthusiasm to the project"

**Lindsay Rea**

(Marketing Peak District & Derbyshire)









## The process

The process of designing a garden or landscape begins with identifying the needs of each individual client. Through detailed questioning about how the garden will be used, for what purpose, and how often, we identify the size and function of each space. We then consider the house style, surrounding landscape and preferences of you the client. Contemporary land art, modern town garden, or traditional country estate; at this stage almost anything is possible and that's what most clients find daunting, but what we find most exciting.

















An example of a topographical survey

## Survey & site analysis

For each garden we design, we always obtain a full topographical survey from our land surveyor unless of course you already have one! They collect essential data such as boundary types and heights, ground levels, and existing features such as; outbuildings, terraces and trees, to provide us with a blueprint of the space to be re-designed.

Our designers also make observational notes, including identifying existing trees and shrubs to be removed or retained, take soil samples, record details on views to hide or expose, identify micro climates and any evidence of pests and diseases present in the garden which could affect any new plants we introduce.

This information forms the basis on which the design proposals are laid out. Clarification of your brief at this stage normally results in a near perfect concept plan, which normally only requires minor amendments once presented to you.











## The concept

The concept plan constantly evolves in the early stages of the design process, and begins in the designer's mind on the first visit to site. Subsequent site visits, the survey, site analysis data and your brief are fused together to develop one single proposal.

Once we have a design solution that we love, we'll create a video that will illustrate the whole site and specific areas in more detail, including a suggestion of the plants and materials we are proposing to use in the scheme. We only present one overall master concept to you, and the reason for this is simple - a strong idea develops through the different design processes we go through and alterations to this can often dilute the design, resulting in the final design losing its soul.

This stage is without doubt the most exciting and creative, and it's from here that all other construction drawings develop.



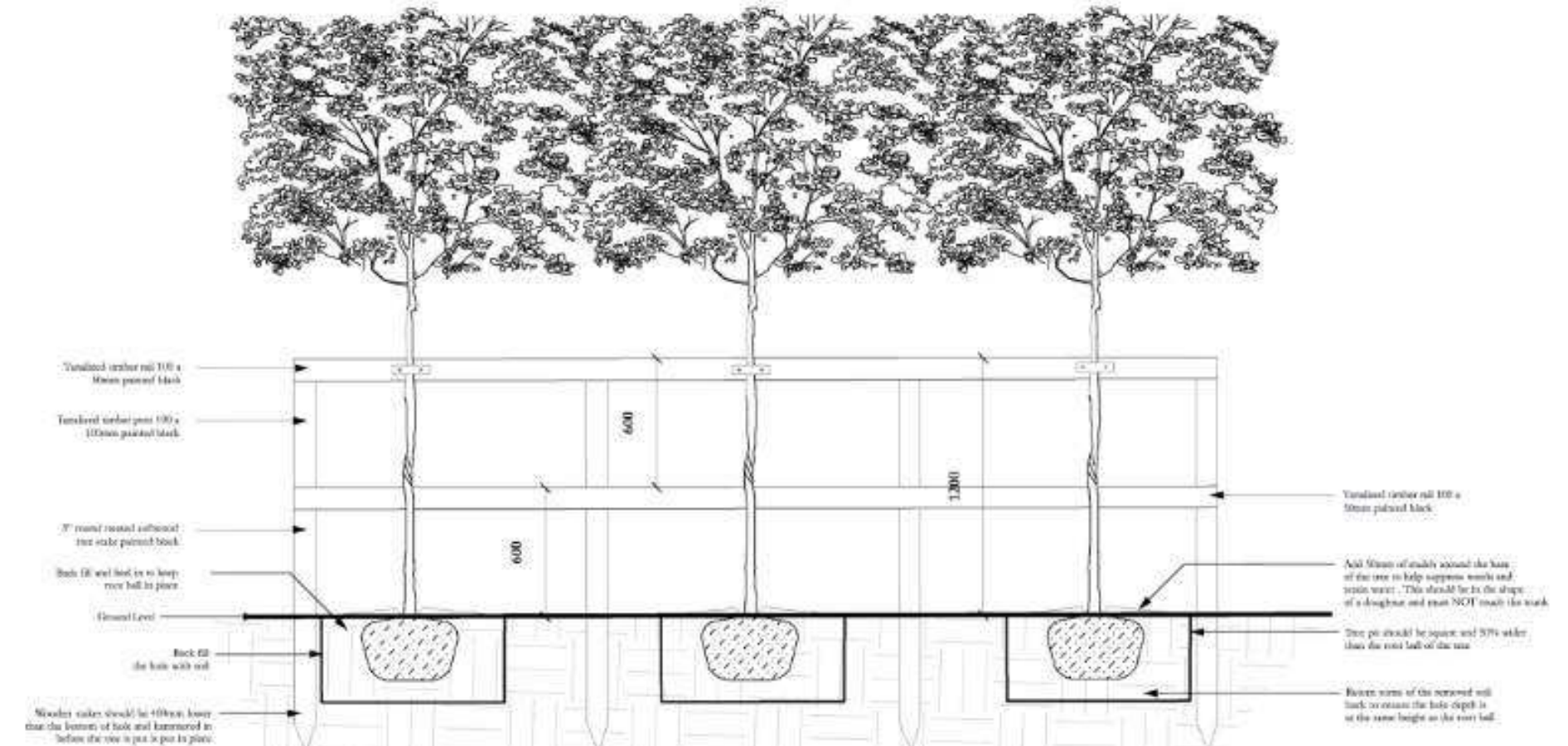
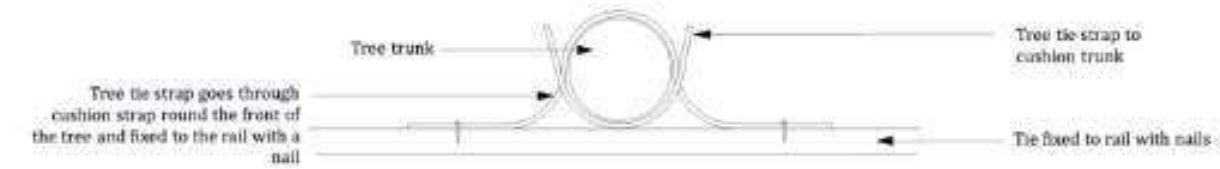
## Construction detailing

For those clients who appreciate genuine quality and craftsmanship, construction detailing is a vital stage of the design process, and an opportunity to clarify the small things which cumulatively make a big difference.

To ensure your finished garden looks as it was intended, we provide the garden construction team with a variety of standard specifications and bespoke drawings for every element of the build. We're always on hand throughout the build process, make weekly visits to site if we are contracted to monitor quality and ensure quality, and the garden is built to our high standards.

Specifying minor details make our gardens stand out from the crowd - from the subtle changes in flower colour, to the finely bevelled edges of the stonework. We know you'll appreciate the effort we go to.

Material choices are often stipulated as part of planning regulations, and so for both their and your approval, we suggest constructing a sample to gain a full understanding of how the proposed products will look.



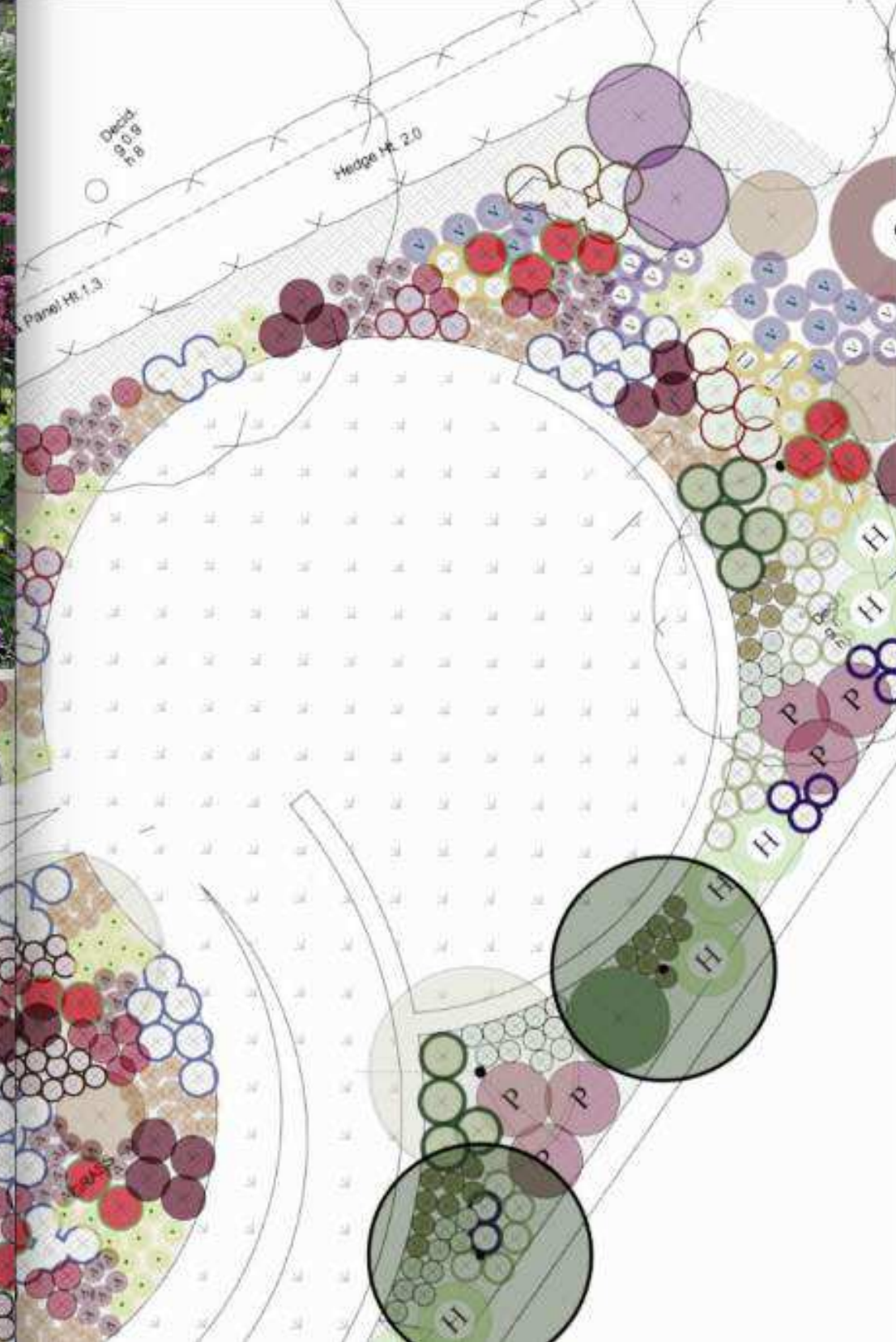
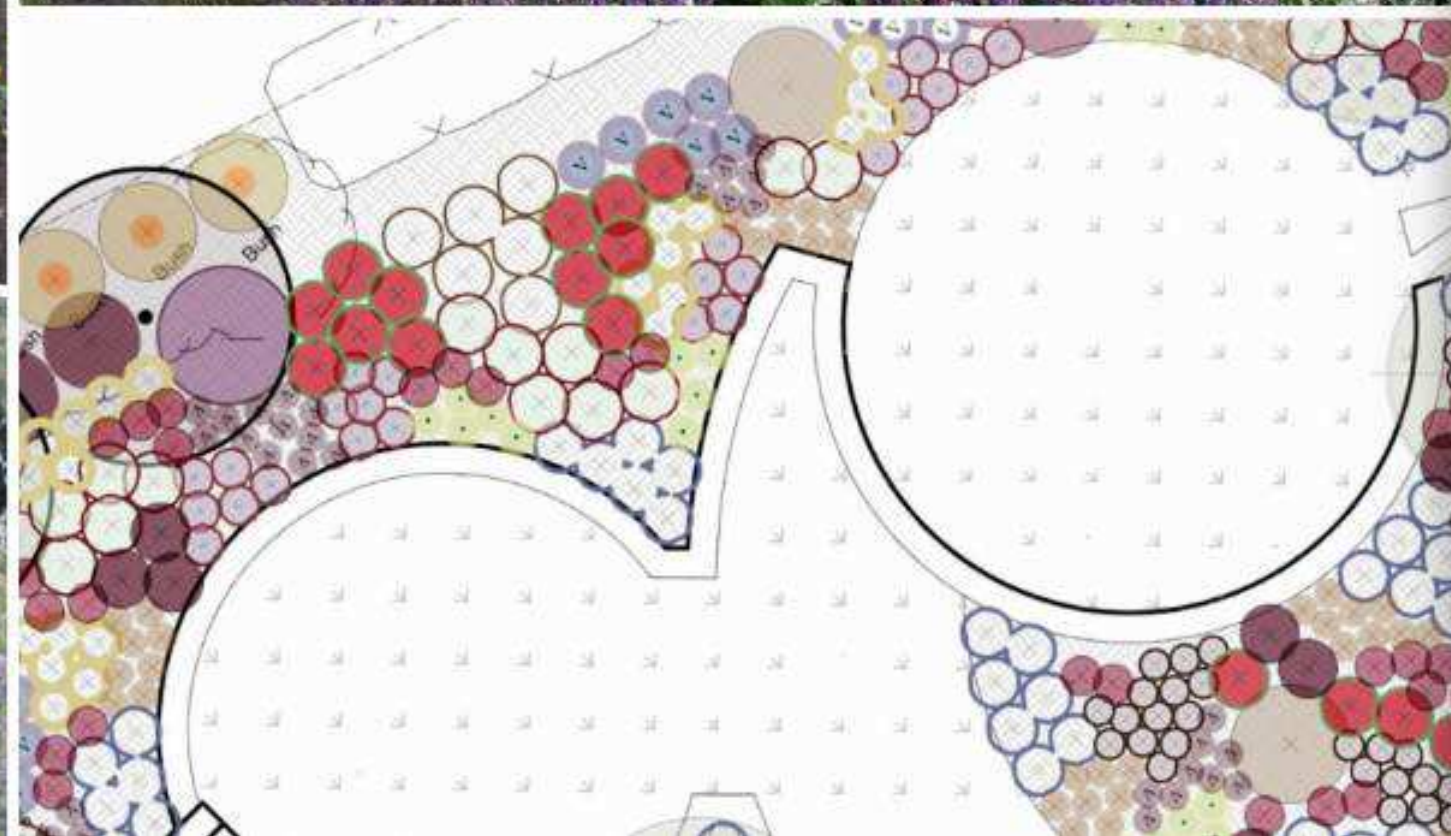




"Lee and his team were amazing to work with and delivered an incredible garden for us at Chelsea Flower Show. The design fulfilled the brief completely and we loved it so much we brought as much of it as we could back to Covent Garden. I couldn't recommend Bestall & Co. more highly for their aesthetic, professionalism and friendliness in doing a brilliant job"

**Charlotte Hastings**  
(Special Projects Manager, Covent Garden)





## The planting plan

Used to soften the harsh lines of bold, geometric design and to add a sense of drama, plants are the glue that bond humans with their outdoor space. Providing shade from the hot midday sun or privacy from a neighbour, greenery adds a feeling of unrivalled serenity.

Plants create a feeling of wellbeing, make sense of a space, provide movement, dappled shade and the connection to seasonality which people crave. Even the least green fingered person cannot deny looking forward to the first snowdrops of spring, or the smell of Jasmine on a warm summer's evening. Bright red berries and acid green stems provide winter interest, and spheres of topiary, nestled amongst herbaceous perennials, provide colour for much of the long summer days.

A well planned planting scheme not only ensures a plant's suitability for its site, but also a succession of ever changing scenery outside your door. A mixture of grasses, flowers, shrubs and trees can be used to enhance a beautiful building, when interplanted with large swathes of bulbs to further extend the flowering season.









## Grown to order

We aim to source some of the best plants on the market and we're prepared to travel to Europe to find them. From herbaceous perennials grown in Yorkshire, trees raised in Lincolnshire, and specialist topiary from Europe, we work closely with specialist nursery men and women to ensure that only the best plants are delivered to us.

The best way to guarantee quality stock is to choose it yourself, and that's just what we do. Our horticulturally trained design team take regular trips to our suppliers to ensure the plants are strong, healthy and pests and disease free, before entering your site.

Some of our stock is grown to order and where trees and hedging is required, it's purchased well in advance. This obviously takes careful planning and specialist knowledge, but we think it's worth the effort.











Chelsea Flower Show 2017



Chelsea Flower Show 2017





Pop up champagne bar in Covent Garden 2017





## Lighting

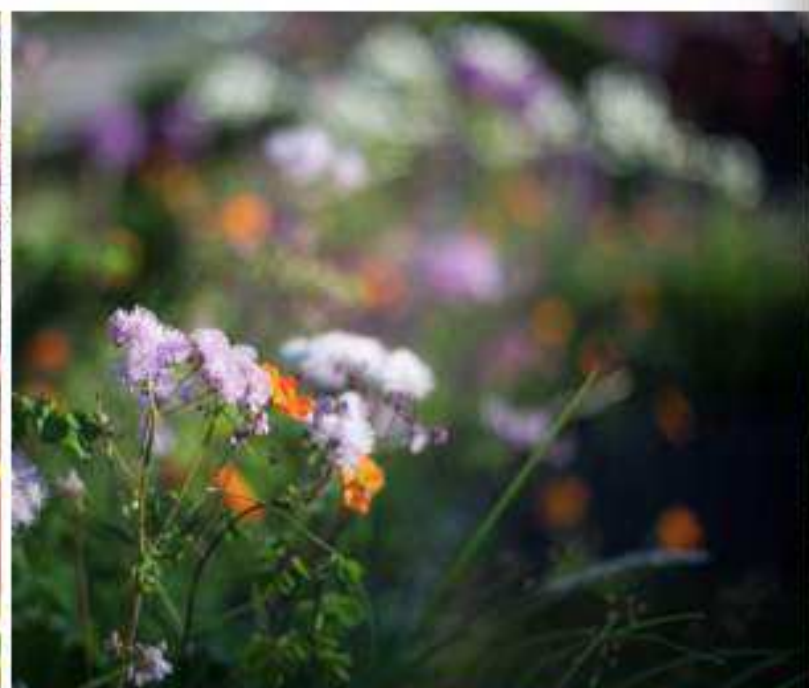
Bringing the garden to life at night is another way to maximise the enjoyment gained from the creation of your new garden. Not only extending the length of time you can spend outside, lighting also visually enhances the view from within the house at night.

Garden lighting is not just for summer - in fact we think you'll find you use it more in the other three seasons of the year. Imagine a snow filled garden, illuminated by crisp white lights, or twinkling fairy lights on a standard llex (Holly lollipop) at Christmas.

Garden lighting can be used to create a variety of effects - from uplighting a tree, downlighting an outdoor kitchen, highlighting a piece of sculpture or washing a flight of steps with a warm glow.











"Thanks to Lee and his wonderful team our garden has become part of the living space.  
Its magical under the stars. We can strongly recommend Lee and his fabulous team"

**Ella Robinson, Wakefield**





RHS Chatsworth 2017



RHS Chatsworth 2017





## Accessories

Accessorising a finished garden shouldn't be something left until the garden is complete. As within your home, accessories offer the opportunity to introduce colour and texture into a space.

Soft furnishings such as outdoor rugs, cushions and throws all provide home comforts and help to decorate outdoor furniture such as sofas, chairs and day beds.

Outdoor lighting can create a dramatic look and provide additional light and warmth to an external social space. Hurricane lamps and candles are a simple way to add a sense of life, but you can't beat a fire pit for getting people together. Huddled around an outdoor fire, be it real logs or an instant gas fired burner, there's just something about sharing this time with friends. Maybe it's a tribal thing?

Other desirable garden accessories include water features and sculpture, both of which form interesting focal points and enhance our designs.







## Project administration

Designing a beautiful garden is only half the story, and in order to turn the vision into a reality it must be executed well. The construction of your new garden can be carried out in several ways; either by using one main landscape contractor who will site manage the implementation of the whole scheme, or by using your builder and then bringing in our specialist soft landscaping team to carry out soil improvement and planting.

Either way we offer a fixed price project monitoring service, removing the stress of coordinating teams of people and running the risk of communication breakdowns. We can manage the project on your behalf and hold site meetings with you and the site manager to ensure the project is on track and meets your expectations.

By managing the construction phase, we have full control over the installation, choice of materials, plant quality and ultimately the final dressing of the outdoor space. Without doubt, this service is the most valuable to busy clients who want minimal involvement in day to day operations.





## Aftercare

If you are considering investing in the creation of a brand new garden, one of our first questions to you will be who will manage its development when we have left? It is important that when we design the garden and planting scheme, we understand the skill level and amount of time available from you or your gardener.

We specialise in low maintenance planting schemes where labour input is kept to a minimum, but just like the interior of a property, an outstanding garden will require 'outdoor housework'.

Upon completion, all our clients are offered a laminated annual maintenance plan. It includes the key tasks you or your gardener will need to know to ensure the successful development of the scheme, from plant feeding and lawn care to pruning and training. We can also use this maintenance plan when training your garden staff and during the official handover at the end of the project.

Finally, our offer of an annual review over five years means we maintain an ongoing relationship with you and your gardeners, it's all part of what we do at Bestall & Co.









**Paul Robinson BA Dip LA**  
Design Director



**Jamie Mellor BSC**  
Operations Manager



**Mark Fletcher BA (Hon)**  
Project Coordinator



**Marion Leclerc Msc**  
Landscape Assistant



**Kevin Gelder BA (Hon)**  
Graduate Trainee

It's good to have something in common.

"Our most successful gardens all have one thing in common, they're built on the foundations of two very solid values. It's important to me that all our staff, clients and suppliers share the same opinion when it comes to creating one of our schemes, and the two values I hold most dearly are integrity and provenance. Our internal mantra is to 'do the right thing', it helps us answer all kinds of difficult questions and we've found it's what sets us apart from the rest."

**Lee Bestall - Founder**





Best residential garden  
Winner



RHS Chelsea Flower Show 2017  
Silver

RHS CHATSWORTH  
FLOWER SHOW

Best residential garden  
Winner



RHS Chelsea Flower Show 2016  
Winner



Society of Garden Designers  
Fully Registered Member



RHS Chelsea Flower Show 2015  
Winner



Harrogate Flower Show 2015  
Gold & Best in Show Award



Grand Designs Live 2012  
Principle Winner



Harrogate Flower Show 2012  
Winner



Best residential garden  
Winner



RHS Tatton Park Flower Show 2005  
Silver



British Association Of  
Landscape Industries  
Fully Registered Member





Lee Bestall has been designing and managing the construction of gardens for over ten years and his genuine passion and enthusiasm are infectious. He regularly writes gardening and outdoor style articles for glossy magazines, and is stand in presenter of BBC radio Sheffield's Gardeners Question Hour.

**Lee Bestall Bsc MSGD**  
Founder

**BESTALL & CO**

The Stables Courtyard  
Renishaw Hall  
Renishaw,  
Derbyshire  
S21 3WB

[www.bestall.co](http://www.bestall.co) 01246 439340